

SHOULDER CHEST



- Multiple chest pressing motions including horizontal press, incline and decline press, chest fly and rotational press.
- Multiple shoulder pressing motions including frontal plane press, sagittal plane press and rotational press.
- Seated stable, seated unstable and standing positions can be utilized.
- Primary or secondary D-Ring selection setting for more or less pre-stretch.
- Bilateral or unilateral use.
- Seat adjustment accommodates users of different heights.

User weight 88 lbs (20 kg) per stack.

SHOULDER CHEST

stack weight	ship weight	width	length	height
2 x 176 lbs (2 x 80 kg)	655 lbs (297 kg)	60" (152 cm)	37" (93 cm)	64" (163 cm)

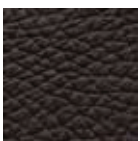
FEATURES AND SPECIFICATIONS

FRAME: Star Trac Silver

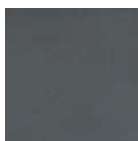
PROGRAMS: Goal specific programs available, ask your sales rep for details.

STANDARD FEATURES: Cable based pulley system, 2 weight stacks, extended cable travel for seated or standing exercises, online programming and educational support.

COLORS:



OR



Brown upholstery with wood trim

Black upholstery with charcoal trim

WARRANTY: Star Trac warrants all framework for a period of 10 years. This limited warranty on structural frame does not include coatings. The following moving parts are warranted for 5 years; rotary bearings, weight stacks, pulleys, guide rods, and structural moving parts. All unlisted parts are warranted for 1 year. Upholstery is warranted for 6 months and is for stitching only.

*Additional restrictions may apply; see your sales representative for detailed warranty information.

*Warranty is subject to change.



expect different®

HUMANSPORT®

©2010 Star Trac. All Rights reserved. Star Trac, the Star Trac logo, Expect Different and HumanSport are registered trademarks of Core Industries.