

TOTAL LEGS



- Multiple lower extremity anterior training including hip stabilization and flexion, knee extension and resisted dorsi flexion of the ankle.
- Multiple lower extremity posterior training including hip stabilization and hip extension, knee flexion and knee extension.
- Single leg motions can be combined and performed with high, moderate or no outside stabilization to facilitate balance and core training.
- Unique anterior foot harness accommodates users of all sizes.
- Unique posterior foot harness allows users to turn the body sideways and perform hip abduction and adduction.
- Raised platform and stabilization handles provide ideal positioning for hip, knee and ankle exercises.

User weight 88 lbs (20 kg) per stack.

TOTAL LEGS				Model HS-M9205	
stack weight	ship weight	width	length	height	
2 x 176 lbs (2 x 80 kg)	691 lbs (314 kg)	60" (152 cm)	37" (93 cm)	64" (163 cm)	

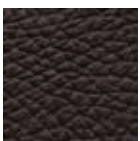
FEATURES AND SPECIFICATIONS

FRAME: Star Trac Silver

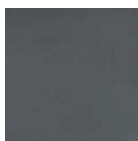
PROGRAMS: Goal specific programs available, ask your sales rep for details.

STANDARD FEATURES: Cable based pulley system, 2 weight stacks, extended cable travel for seated or standing exercises, online programming and educational support.

COLORS:



OR



Brown upholstery with wood trim

Black upholstery with charcoal trim

WARRANTY: Star Trac warrants all framework for a period of 10 years. This limited warranty on structural frame does not include coatings. The following moving parts are warranted for 5 years; rotary bearings, weight stacks, pulleys, guide rods, and structural moving parts. All unlisted parts are warranted for 1 year. Upholstery is warranted for 6 months and is for stitching only.

*Additional restrictions may apply; see your sales representative for detailed warranty information.

*Warranty is subject to change.



expect different®

HUMANSPORT™

©2010 Star Trac. All Rights reserved. Star Trac, the Star Trac logo, Expect Different and HumanSport are registered trademarks of Core Industries.